

[WWW.ACE-KARAOKE.NET](http://WWW.ACE-KARAOKE.NET)

---

## TECHNOLOGY MANUAL

**HDD Karaoke Machine**

**Decode board**



**Mp3 lyric & Mpeg4 Hdd karaoke system**

## A. Product feature

### Main function:

- \* Support FAT32 biggest to 2000G hard disk. 160G HDD can save 8000s mpeg4 AVI songs or 30000s MP3/WMA Lyric MTV songs.
- \* Support VCD(MPEG1)/DVD(MPEG2), JPEG,MPEG4(DIVX),WMV Video files.
- \* Support MP3,WMA,AC-3 Audio files.
- \* Support MP3/WMA lyric MTV songs.
- \* Selected songs by NUMBER & OSD
- \* The OSD show on TV screen, support many kind of select songs way.

### Extra Function:

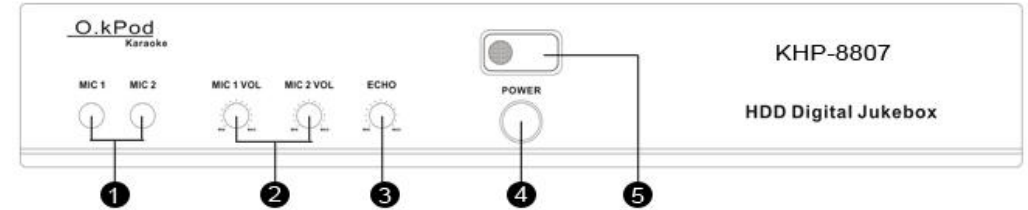
- \* with INSERT COIN function.
- \* built-in professional MIC Echo.
- \* can SCORE.
- \* Can add songs from computer by USB2.0
- \* With EXT IDE port,can add songs from DVD-ROM disc.
- \* With EXT-IR Port

## B. Accessories List:

- |                               |       |
|-------------------------------|-------|
| 1. USB2.0 line                | 1 pcs |
| 2. Extra IDE 80pin flat cable | 1 pcs |
| 3. Extra +12v+5v power line   | 1pcs  |
| 4. AV line                    | 1 pcs |
| 5. Remote controler           | 1set  |
| 6. Manual of User             | 1pcs  |

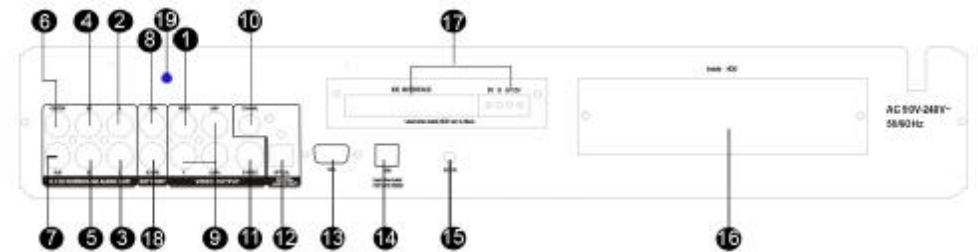
## C. Outport feature:

### 1)Whole machine outport:



(Faceplate)

1. MIC IN.
2. MIC Volume control
3. MIC ECHO
4. POWER
5. Remote receive widow,the red LED is "POWER",blue LED is "remote Signal".

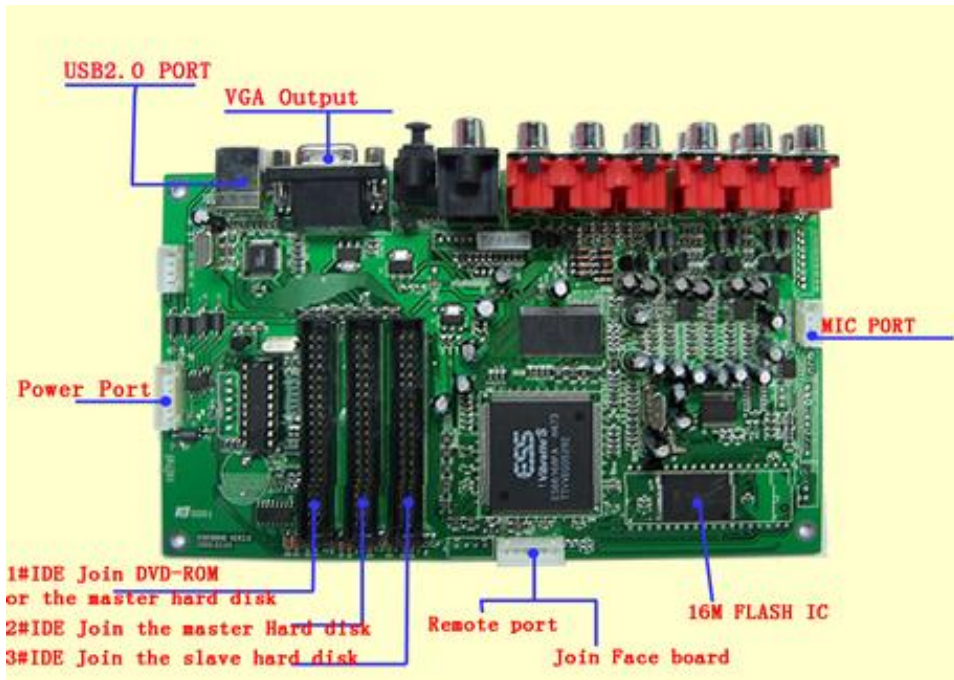


(Backplate outport map)

- |                       |   |
|-----------------------|---|
| 1. VIDEO OUTPORT      | 13. VGA port (Reserve)  |
| 2. R channel          | 14. USB port  |
| 3. L channel          | 15. EXT-IR (remote receive port)  |
| 4. Surround R         | 16. Inside HDD case   |
| 5. Surround L         | 17. Extra IDE interface (when connect with DVD-ROM,the inside HDD must be setted to SLAVE). |
| 6. Central audio      | 18. SCORE in (Reserve)  |
| 7. Sub woofer speaker | 19. (Reserve)   |
| 8. COIN inport        |   |
| 9. Y/U/V video        |   |
| 10. Coaxially         |   |
| 11. S-VIDEO           |   |
| 12. Optical           |   |



2) Decode board output:



## D. THE HDD FILES SYSTEM:

The karaoke machine can working all right, must need to create file system in the hard disk:(The HDD should be formatted one partition by FAT32 mode)

### 1. The HDD file folder allotment:

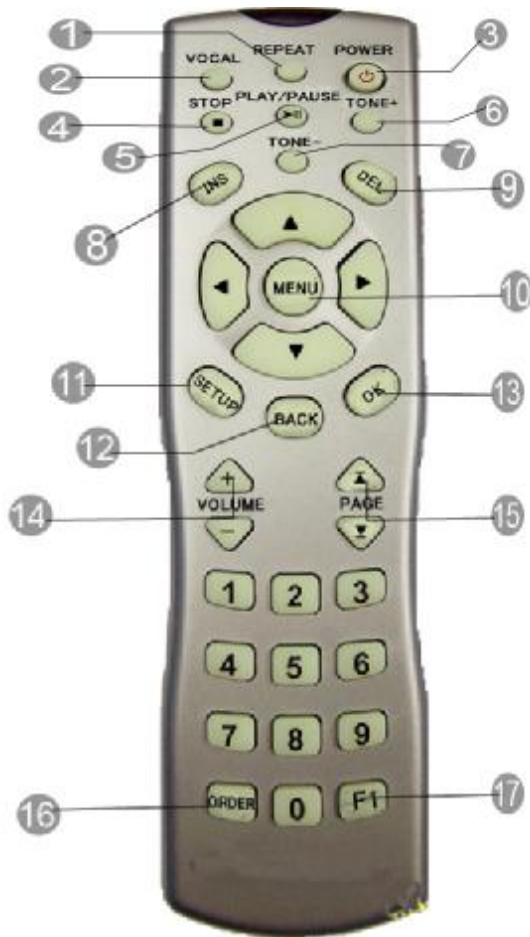
folder name	Definition	Explanation
00~89	songs of songlist	In the folder,the songs name is 001.xxx~999.xxx,the song serial number is 5 digit, For example: in /03/ folder,the song name is 006.XXX ,so song serial number is 03006. select these songs must base on songlist.txt
90~98	User songs	Be created by user self, can name 001.XXX~999.XXX in the each folder, but these aren't same than above that. It don't need exist in the songlist,.txt and can be selected by number, the song name will be show "USER SONG" on TV. <b>Warning: When select 90000~98999 song number,even if no found in HDD, it will be counted COIN still.</b>
99	Background video-USER VIDEO	Put in the background move video files for MP3/WMA lyric MTV songs. In each folder can put in 001.MPG~999.MPG (VOB) files, use MPEG2(VOB-DVD or SVCD) format is good. don't have to any audio in it. The video files can be play 5 min to some hour, can be a long time files or many short files. The opeating change different folder by remote controler F1 KEY.
BGV00	Background video 0-VIEW	
BGV01	Background video 1-Sightseeing	
BGV02	Background video 2-Dance	
BGV03	Background video 3-Films	
BGV04	Background video 4-Beauty	
BGV05	Background video 5-Sexy	
SYSTEM	System files:	All files in it that machine working need.
	Songlist.txt	Songlist file, the machine can find and select songs to play base on it.
	Logo.mpg	The select song screen background LOGO picture,Can be converted from JPEG by USER

HZW5252.IDX, HZW5252.LIB	The Character style library of Lyric
ASC3232, ASC5252.LIB	ASCII style library
GB2312JF, GB2312JI, BIG5FONT, BIG5INDEX, CNSINDEX	Chinese GB/BIG5 style libray
MENUFONT	The Character style library of OSD menu
setupEN.exe	Songlist manage software, can be install into computer to manage the SONGLIST.TXT file
STAR sub folder	000.MPG~999.MPG is SINGER's photo picture

### 2. The MTV files format list:

***.AVI	MPEG4 format	Divx code is good
***.MPG	MPEG1& 2 format	VCD/DVD
***.DAT	VCD format	
***.VOB	DVD format	
***.WMV	WMV format	
***.WMA	WMA audio format	Size is small than MP3
***.MP3	MPEG_3 audio format	
***.ksc	Lyric+time file	Can be EDIT
***.mtv	Lyric+time file	Can be EDIT , May be encrypted or not.
***.sgk	Lyric+time file (offer by <a href="http://WWW.ACE-KARAOKE.NET">WWW.ACE-KARAOKE.NET</a> )	is encrypted

## E. THE REMOTE CONTROLER FUNCTION:



1. Replay
2. VOCAL/ANALOG
3. POWER
4. STOP
5. PLAY/PAUSE
6. TONE UP
7. TONE DOWN
8. INSERT
9. DELETE
10. OSD MENU
11. SETUP
12. BACK(RETURN)
13. ENTER(OK)
14. Volume control
15. UP/DOWN PAGE
16. SELECTED list
17. Change background video picture, can be operated at <SOTP> status

## F. OPERATION:

### 1. Basic Setup:

At the <STOP> status, press <SETUP> key on the remote controler, into system setup

menu.

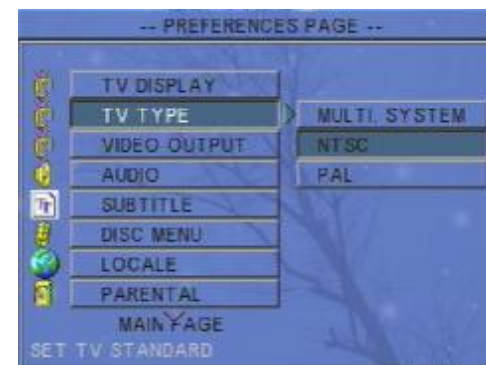


### (1) OSD language setup:



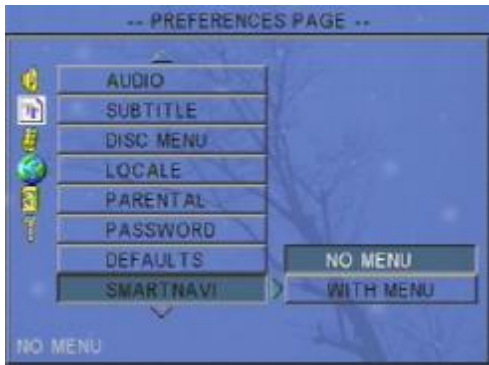
Into "GENERAL SETUP" à "OSD LANG" à select "ENGLISH" option.

### (2) TV TYPE:



into “**PREFERENCES**”pageà “**TV TYPE**”à “**NTSC**”option.

**(3) Setup Machine Start Mode:**



Into “**PREFERENCES**”à “**SMARTNAVI**”à select “**NO MENU**” or “**WITH MENU**” option.

- I “**NO MENU**”----when select this option, the machine will work on *NUMBER SELECT SONGS* mode, start machine will first show *NUMBER* input status.
- I “**WITH MENU**”----- when set this option, the machine will work on *OSD SELECT SONGS* mode, start machine will first show *MAIN OSD* status.

**(4) Karaoke setup:**

*a. Karaoke Mode option:*



- I “**OFF**”-----This option will off “**MIC IN**”,but when select this option only that 5.1 channel will can be opened.
- I “**KARAOKE**”-----This option will open “**MIC IN**”, and the machine will be export 2 channel audio.
- I “**SCORING**” -----This option will open SCORING function.

**Note:** 1) Only when the number of song is 00001~79999 can be showed the **SCORE**.

2) Only Mp3/WMA\_Lyric form MTV songs can show **SCORE**.

*b. Score Base option:*



The score base on 70, 80, 90 three level. The option need pass word. Please consult (5).

*c. Coin Control setup:*



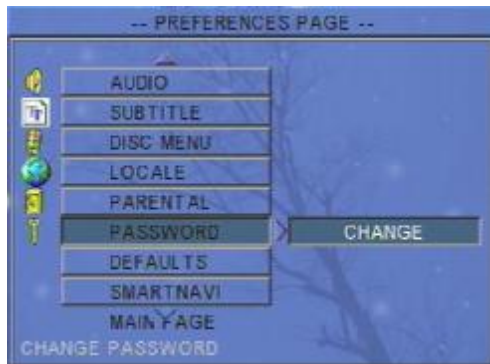
Can select these option to control when select songs need how many coin fee. The “**COIN FREE**” option can be seted to ON/FREE coin function.The option need pass word. Please consult (5).

**d. Files copying option:**



Can copy files form extra IDE device(DVD-ROM) into inside HDD of machine, use for add songs form DVD song disc specially .

**(5). Password Setup:**



Into "PREFERENCES" page à "PASSWORD" à "CHANGE" option. Can change new password of system(coin...scoring....).

The super password is : :3308

**2. How to select songs:**

The select songs operating interface:



- (1) Sum of selected songs.
- (2) Number of next selected song.
- (3) Number of next some selected songs list.
- (4) Sum of coin.
- (5) Name of next selected song

- (6) Song number input.
- (7) Show the song name when input number
- (8) Song lyric show.
- (9) Menu of select songs at OSD mode

### G. THE SONGLIST.TXT RULES:

Songs sheet is a **Songlist.txt** file, in it, Each line is meaning a song, there are 11 semicolons for definition the information of song, the rule is:

A WHOLE NEW WORLD;1;Beyond;10;5;9;AWHO;10002;BEY;1;9;270

- (1) Song name
- (2) 0-the song's VOCAL at R channel of MTV file. 1- the song's VOCAL at L channel of MTV file. **Don't need option usually.**
- (3) Singer name
- (4) Sum of the song name's words
- (5) The Language item No.

1--CHNIESE 5—ENGLISH 6—JAPANESE 7-DISCO 8—MOVES 11—KOREAN  
13-TAGALOG 15-OTHER Foreign

The machine base on this option to allot the songs at OSD menu item.

- (6) Volume,option: 1~9, say 10%~90% of Max Volume, "0" and"space" is keeping currently volume,( Don't need option usually) .
- (7) The first spelling of song name.
- (8) The Number of song: folder name + file name , is 5 digit, For example: in /03/ folder,the song name is 006.XXX ,so song serial number is 03006.
- (9) The first spelling of Singer.
- (10) The singer classification: 1—Male singer 2--Female singer 3—Group
- (11) Song Type:

9--SPECIAL OCCASION SONGS 11- CONCERT 12—MTV 13-SPORTS 14- MP3

The machine base this option to allot the songs at OSD menu type item.

- (12) The Singer code: The name number of the singer photo picture file in the HDD's /SYSTEM/STAR/ folder. This option be used in double screen karaoke machine only.

How make the **songlist.txt**,there are these ways: :

1. Use text editor software (Notepad) to edit it.
2. Use the EXCEL sheet software to edit and manage *songlist.txt*,use some formula function to automatic building songlist.txt file,by this way can manage song sheet when inquire and sort , is very facility.
3. Use the machine's *SONGLIST MANAGE* software tool to edit it(That is **SetupEN.exe** file in the /system/ folder of machine's HDD, can be installed into computer C:\ system), run it , loading and edit the songlist.txt file, by this way can check the songlist.txt to conform with rules and check song files in the HDD with songlist.

### H. HOW TO ADD SONGS:

#### 1. Add songs into HDD from computer with USB port way :

- 1).Set inside HDD to **MASTER** status.
- 2).At backplate of machine ,Insert USB line into USB port, connect machine with computer,Turn on the machine,the computer will find a new device, then the machine's HDD be regarded as a extra HDD. can doing copy/delete/updata song files operation .

#### 2. Add songs with DVD-ROM disc.

- 1) Connect a DVD-ROM device to IDE interface port of macine, and connect them with +12+5 power line.
- 2) Set inside HDD to **SLAVE** status
- 3) Building a song disc:
  - \* Name the songs with xxxxx.xxx format, For example: 32001.AVI, 10001.MP3
  - \*Name songlist.txt that want updata new song sheet. Note: it will replace the old songlist.txt in the HDD.
  - \*Don't need building any file folder in the disc, because it will automatic allot the song files into the relative folder of HDD base on files type rule.
- 4)Turn on machine, open DVD-ROM device, put in the song disc,close the door of DVD-ROM,press <STOP> key of remote controler make machine at <STOP> status.Press <SETUP> key into system setup menu page,in the " **KARAOKE SETUP**"pageà " **FILES COPYS**",select " **COPY**"



option, it will begin copy all song & songlist.txt files from disc into HDD, sametime show the progress, copy finish the machine note: "OFF POWER". Turn on again,the add songs operating is OK.

### I. ATTACHED EXPLANATION:

#### 1. How make OSD Logo.MPG :

By a software tool convert the LOGO.JPG format to LOGO.MPG, ( 720\*576 size,30hz,1 Form only) , can be showed on screen as the select songs OSD background.

#### 2. AUX40 I/O port definition:



AUX40 I/O Port

This I/O port is a output at the main board of machine inside, can exports a signal, It is LOW when machine keep at PLAY song status,and it will be HIGH when machine change to stop status.

#### 3. Random play songs function:

Have a special remote control key code (IR code: 057) definition, can offer this function for user when need. Press function key to run/stop and press <STOP> key to next. When it run the "MIC IN" will be close and AUX40 I/O port export will be HIGH always.

#### 4. Ext-IR port definition:



Ext-IR port can connect to remote control key board's receiver

The function sheet of extra remote control key board definition: (The keyboard is woking at 3V)

The keyboard function define and remote code:

PIN	1	2	3	4	5	6	7	8
9		UP PAGE		Volume+		power	Replay	Vocal
10		DOWN PAGE	PAL/NTSC	Volume-		Tone+	play	stop
11		3	2	1		delete	Tone-	insert
12		6	5	4			↓	↑
13		9	8	7		→	OSD MENU	←
14	Random play	Background	0	selected		OK	BACK	setup
000		Vocal /Analog			042		Up Page	
001		Replay			044		Volume-	
002		power			045		PAL/NTSC	
004		Stop			046		Down Page	
005		Play			048		Number 1	
006		Tone+			049		Number 2	
008		Insert			04A		Number 3	
009		Tone-			04C		Number 4	
00A		Delete			04D		Number 5	
00C		↑			04E		Number 6	
00D		↓			050		Number 7	
010		←			051		Number 8	
011		OSD MENU			052		Number 9	
012		→			054		Selected	
014		Setup			055		Number 0	
015		Back			056		Background	
016		OK			057		Random play	
040		Volume+						

I User system code : 807F or 00FF

**5.technology limited:**

songlist<15000s songs

singer<2000s

lyric files size<=22 kByte